

Nube di Rho Ophiuchi – 01/08/2013

Telescopio o obiettivo di acquisizione (Imaging telescope or lens): Canon EF 100 mm f/2.8 L IS USM Macro a/at f/2.8

Camera di acquisizione (Imaging camera): Canon EOS 500D (Rebel T1i) [4.7 μ m]

Montatura (Mount): i0pron StarTracker

Telescopio o obiettivo di guida (Guiding telescope or lens):
non presente (not present)

Camera di guida (Guiding camera): non presente (not present)

Riduttore di focale (Focal reducer): non presente (not present)

Software (Software): IRIS + Adobe Photoshop CS3/CS6

Accessori (Accessories): non presente (not present)

Filtri (Filter): non presente (not present)

Risoluzione (Resolution): 3888 x 2592 (originale/original),
4770 x 3178 (finale/final)

Data (Date): 01/08/2013

Luogo (Location): Roque de los Muchachos – La Palma, Spagna
(Spain)

Pose (Frames): 30 x 100 sec at/a 800 ISO

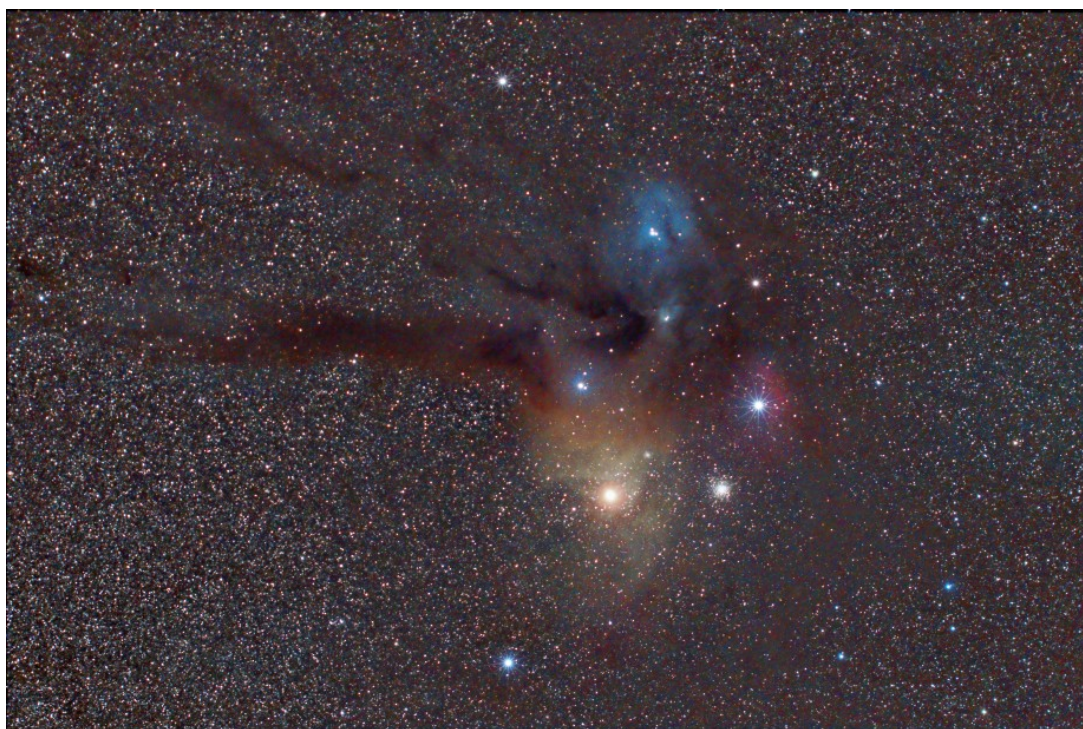
Calibrazione (Calibration): 13 x 100 sec dark (01/08/2013), 63
bias (01/08/2013), 110 flat (14/08/2013).

Fase lunare media (Average Moon phase): 21.3%

Campionamento (Pixel scale): circa/about 9.651 arcsec/pixel

Focale equivalente (Equivalent focal length): 100 mm

Note (note):



Nube di Rho Ophiuchi - 01/08/2013