

M37 (NGC 2099) – 06/12/2013

Telescopio o obiettivo di acquisizione (Imaging telescope or lens): Rifrattore ED (ED refractor) Tecnosky Carbon Fiber 80mm f/7

Camera di acquisizione (Imaging camera): CCD Atik 383L+ B/W [5.4 μm]

Montatura (Mount): SkyWatcher NEQ6

Telescopio o obiettivo di guida (Guiding telescope or lens): Newton SkyWatcher BlackDiamond 150 mm f/5

Camera di guida (Guiding camera): Magzero MZ-5m B/W [5.2 μm]

Riduttore di focale (Focal reducer): riduttore/spianatore 0.8x (0.8x reducer/field flattener)

Software (Software): PixInsight + Adobe Photoshop CS3

Accessori (Accessories): non presenti (not present)

Filtri (Filter): Astronomik LRGB

Risoluzione (Resolution): 3362 x 2537 (originale/original), 3280 x 2472 (finale/final)

Data (Date): 06/12/2013

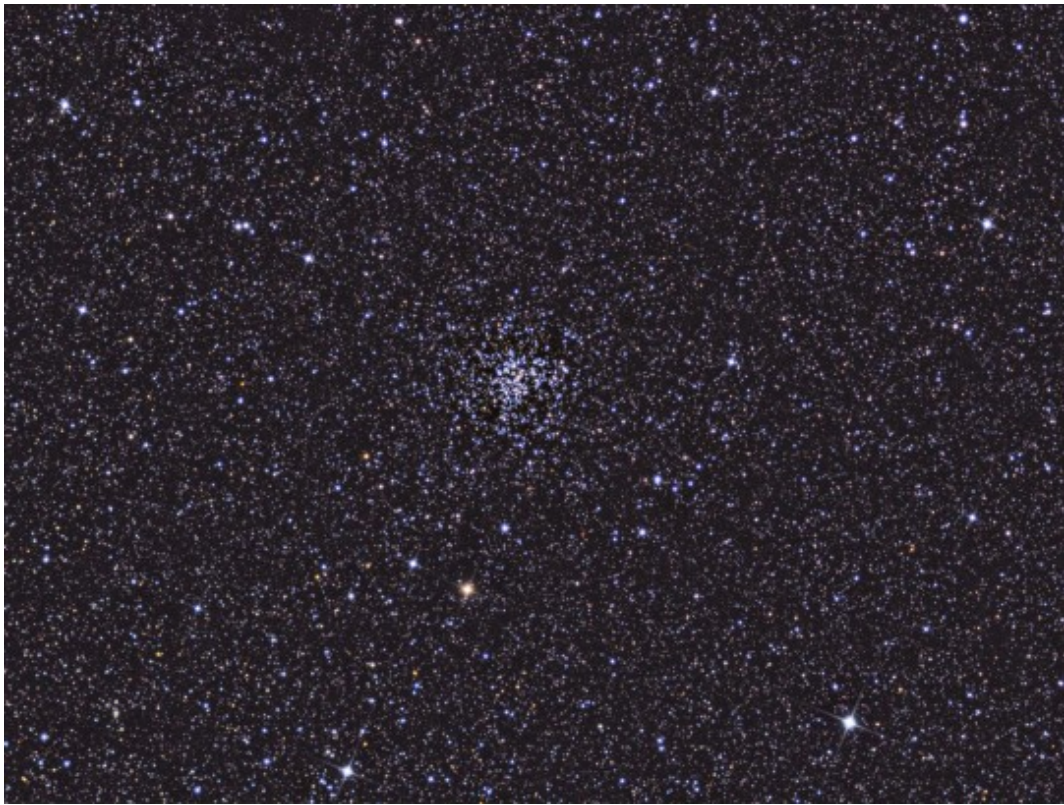
Luogo (Location): Briosco – MB, Italia (Italy)

Pose (Frames): 24 x 180 sec bin 1x1 L, 6 x 300 sec bin 1x1 R, 5 x 300 sec bin 1x1 G, 6 x 300 sec bin 1x1 B

Calibrazione (Calibration): 10 x 180 sec bin 1x1 dark L, 10 x 300 sec bin 1x1 dark RGB, 41 bias, 30 flat L, 30 flat R, 30 flat G, 30 flat B

Fase lunare media (Average Moon phase): 20.9%

Note (note): LRGB



M37 (NGC 2099) - 06/12/2013