

C/2012 S1 (ISON) – 03/03/2013

Telescopio o obiettivo di acquisizione (Imaging telescope or lens): Rifrattore ED (ED refractor) Tecnosky Carbon Fiber 80mm f/7

Camera di acquisizione (Imaging camera): CCD Atik 314L+ B/W [6.45 μm]

Montatura (Mount): SkyWatcher NEQ6

Telescopio o obiettivo di guida (Guiding telescope or lens): Newton SkyWatcher BlackDiamond 150 mm f/5

Camera di guida (Guiding camera): Magzero MZ-5m B/W [5.2 μm]

Riduttore di focale (Focal reducer): riduttore/spianatore 0.8x (0.8x reducer/field flattener)

Software (Software): IRIS + Adobe Photoshop CS6

Accessori (Accessories): non presente (not present)

Filtri (Filter): Astronomik CCD L

Risoluzione (Resolution): 1391 x 1039

Data (Date): 03/03/2013

Luogo (Location): Sormano – CO, Italia (Italy)

Pose (Frames): 1 x 600 sec bin 1x1 a/at -10.0°C

Calibrazione (Calibration): non presente (not present)

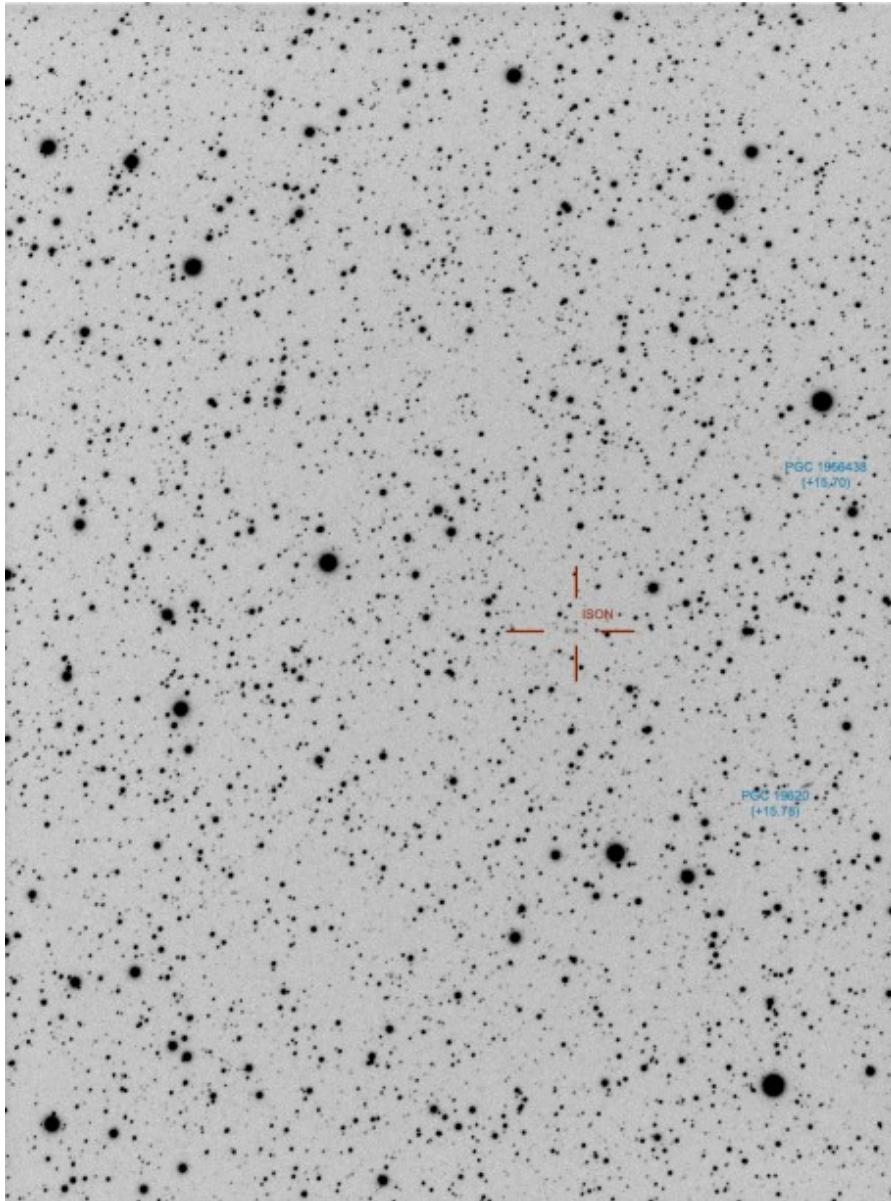
Fase lunare media (Average Moon phase): 60.7%

Note (note): immagini in bianco e nero ed invertite per mostrare la cometa (picture in black and white and inverse in order to show the comet)



C/2012 S1 (ISON) - 03/03/2013

la versione invertita con label (the negative version with labels):



C/2012 S1 (ISON) versione invertita -
03/03/2013

Per scaricare i file originali in formato FIT [clicca qui](#)
(password richiesta) / [Click here](#) in order to download the
original files in FIT format (password request)