

# Nube di Rho Ophiuchi – 01/08/2013

**Telescopio o obiettivo di acquisizione (Imaging telescope or lens):** Canon EF 100 mm f/2.8 L IS USM Macro a/at f/2.8

**Camera di acquisizione (Imaging camera):** Canon EOS 500D (Rebel T1i) [4.7  $\mu\text{m}$ ]

**Montatura (Mount):** i0pron StarTracker

**Telescopio o obiettivo di guida (Guiding telescope or lens):**  
non presente (not present)

**Camera di guida (Guiding camera):** non presente (not present)

**Riduttore di focale (Focal reducer):** non presente (not present)

**Software (Software):** IRIS + Adobe Photoshop CS3/CS6

**Accessori (Accessories):** non presente (not present)

**Filtri (Filter):** non presente (not present)

**Risoluzione (Resolution):** 3888 x 2592 (originale/original),  
4770 x 3178 (finale/final)

**Data (Date):** 01/08/2013

**Luogo (Location):** Roque de los Muchachos – La Palma, Spagna  
(Spain)

**Pose (Frames):** 30 x 100 sec at/a 800 ISO

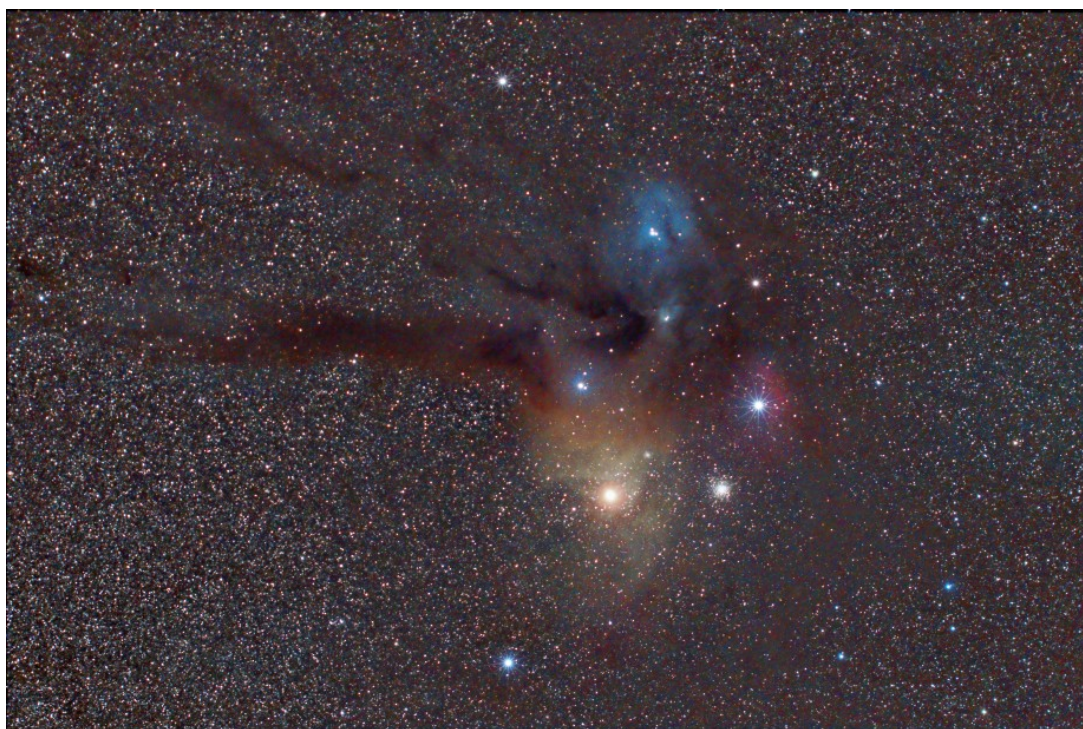
**Calibrazione (Calibration):** 13 x 100 sec dark (01/08/2013), 63  
bias (01/08/2013), 110 flat (14/08/2013).

**Fase lunare media (Average Moon phase):** 21.3%

**Campionamento (Pixel scale):** circa/about 9.651 arcsec/pixel

**Focale equivalente (Equivalent focal length):** 100 mm

**Note (note):**



Nube di Rho Ophiuchi - 01/08/2013