

Cr 399 – 15/08/2023

Telescopio o obiettivo di acquisizione (Imaging telescope or lens): Canon EF 200 mm f/2.8 L II USM a/at f/3.2.

Camera di acquisizione (Imaging camera): Canon EOS 500D (Rebel T1i) con filtro Baader (with Baader Filter) [4.7 μ m]

Montatura (Mount): iOptron SkyGuider Pro

Telescopio o obiettivo di guida (Guiding telescope or lens): Rifrattore acromatico (refractor) Svbnony 50mm f/4

Camera di guida (Guiding camera): ASI 290 MM Mini [2.9 μ m]

Riduttore di focale (Focal reducer): non presente (not present)

Software (Software): PixInsight 1.8.8-9 + Adobe Photoshop 24.7.0 + Topaz DeNoise AI 3.0.3

Accessori (Accessories): non presente (not present)

Filtri (Filter): non presente (not present)

Risoluzione (Resolution): 4752 x 3168 (originale/original), 4737 x 3156 (finale/final)

Data (Date): 15/08/2023

Luogo (Location): Planaval di La Salle – A0, Italia (Italy)

Pose (Frames): 30 x 240 sec at/a 800 ISO.

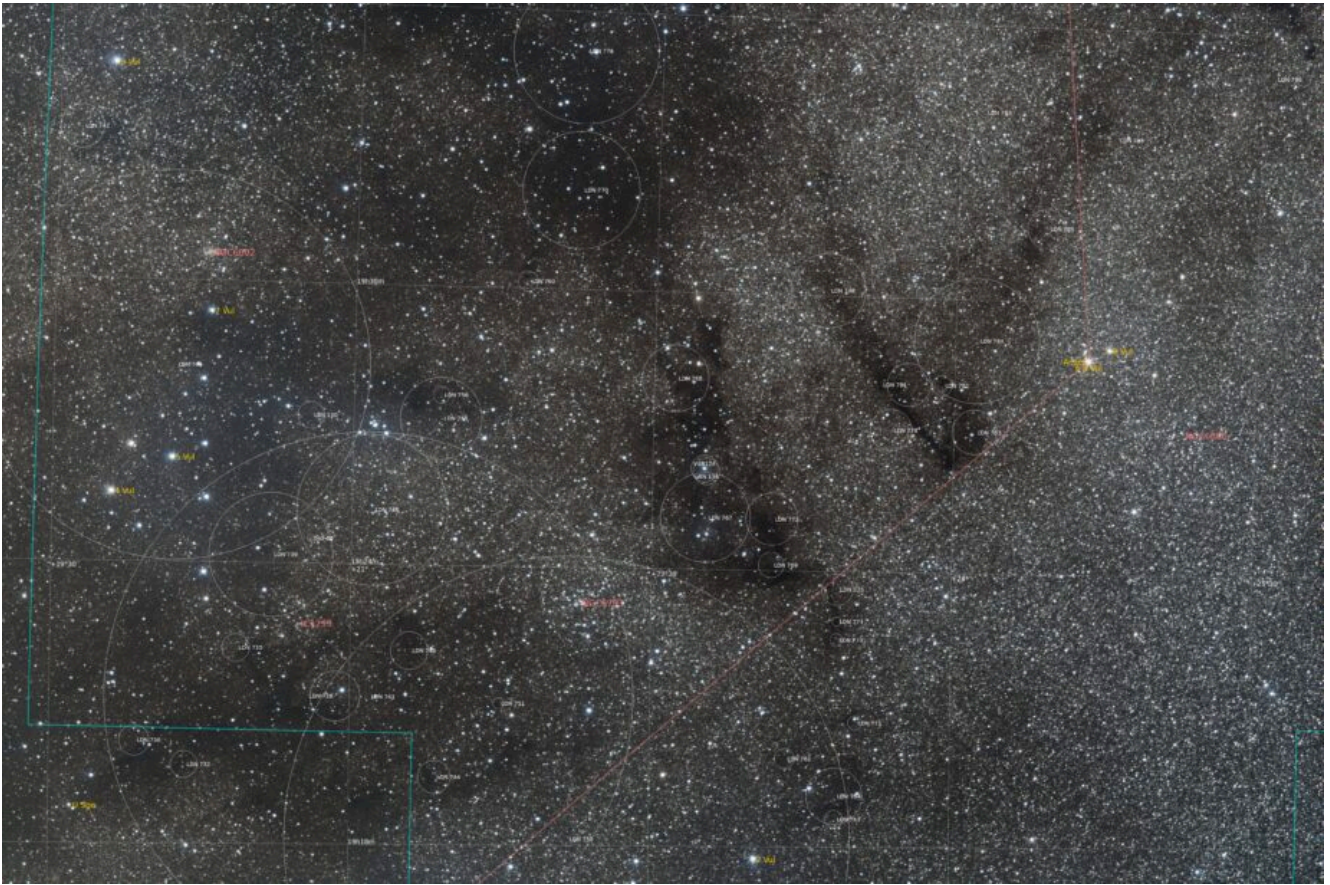
Calibrazione (Calibration): 20 dark, 61 flat dark, 60 bias, 62 flat

Fase lunare media (Average Moon phase): 0.4%

Campionamento (Pixel scale): 4.855382 arcsec/pixel

Focale equivalente (Equivalent focal length): 200 mm

Note (note):



Volpetta – 15/08/2023 [annotazioni]



Cr 399 – 15/08/2023